

Dear _____,

Congratulations on the purchase of your RV from Kratzmann Caravans, we wish you many wonderful adventures touring this magnificent country of ours.

Please find inside this booklet great information we have compiled over the years to help you get started with caravanning.

Yours in Caravanning

The Kratzmann Team



Live the Dream

IMPORTANT DISCLAIMER

THE INFORMATION PROVIDED IN THIS BOOK IS A COLLECTION OF GENERALISED HINTS AND TIPS PROVIDED TO ASSIST OUR CLIENTS AND IS TO BE USED AS A GUIDE ONLY. THE INFORMATION PROVIDED MAY OR MAY NOT BE RELEVANT TO YOUR RV AND IS A GENERAL OVERVIEW OF HINTS, PROCEDURES AND TIPS. WE STRONGLY RECOMMEND AS IT IS IMPORTANT THAT YOU READ ALL OWNERS MANUALS AND USERS GUIDES FOR ALL APPLIANCES AND COMPONENTS IN YOUR RV AND WE ACCEPT NO RESPONSIBILITY FOR THE ACCURACY OF THE INFORMATION PROVIDED.

CONTENTS INFORMATION

IMPORTANT NOTES – READ BEFORE FIRST USE	3
ROAD RECOMMENDATIONS FOR LISTED PRODUCTS	4
YOUR CARAVAN IS A MAN-MADE PRODUCT	5
ELECTRICAL INFORMATION	5
WARRANTY PORCEDURES TO FOLLOW - IMPORTANT	6
IMPORTANT POINTS TO HELP YOU ACHIEVE QUALITY SERVICE	6
SERVICE, WARRANTY & MAINTANENCE INFORMATION	7
SERVICE PRICING	7
TYRE PRESSURE GUIDE	8
PRE-TRIP PRACTICE	9
OVERLOADING	9
HOOK UP & BEFORE TRAVEL	10
ARRIVAL & SET UP AT A CARAVAN PARK	11
BATTERY WARRANTIES & MAINTENANCE	12
240 VOLT, 15 AMP POWER SUPPLY INFORMATION	12
7-PIN PLUG INFORMATION	13
WEIGHT DEFINITIONS	13
CARAVANNING HINTS & FREQUENTLY ASKED QUESTIONS	14-19

READ BEFORE FIRST USE

Gas Bottles

Please note that your gas bottles will require filling before running your gas appliances. We are unable to fill gas bottles as we do not have the facilities or licenses for bulk gas storage. We have small quantities of gas on our premises to carry out our pre delivery testing. Please note there has been no charge for gas in your purchase from Kratzmann Caravans.



Interior Cleaning

As part of our Pre Delivery your RV has been cleaned inside and out. You will notice sawdust and other materials appearing in your cupboards and throughout your van in the first few trips. This is due to manufacturing materials being caught in crevices of the interior of your RV and then being dislodged by the vibrations of normal road travel. These materials are easily removed by using a vacuum or a brush.

Locks

If your exterior locking mechanisms are stiff this can be easily solved by spraying a silicon spray or CRC inside the key holes to lubricate the mechanism and repeatedly turning the lock with the key.



Trailer Plug

The trailer plug is a non warrantable component which requires correct use and maintenance. Clean the terminals on the tow vehicle and RV plug before use (a CRC or RP7 type spray would be appropriate for cleaning), ensure the plug is not left on the ground and when removing the plug from the tow vehicle always remove by holding the plug itself and not the wiring.



Tightening of Wheel Nuts

Please ensure that you retighten the wheel nuts on your RV before your first trip.

Rollout Awning

Please refer to the rollout awning instruction manual placed in your delivery bag for correct operation before use. AS BREAKAGES FOR CATCHES AND BRACKETS ARE NOT WARRANTABLE.

ROAD RECOMMENDATIONS FOR LISTED PRODUCTS

Touring & Dirt Road models fitted with 14" Wheels and Tyres...



Concept Ascot
A'Van Range
Goldstream
Concept Belmont X12
Franklin G2 & Oz Factor
Jurgens Pop-Tops and Caravans
Traveller



Suitable Conditions: Sealed and unsealed graded dirt roads.

Adventure & Outback Packs fitted with 4x4 15x7 Wheels & Tyres



Franklin Micro
Goldstream Camper Trailers
Franklin Crosstrail
Franklin G2+ Plus
Franklin X Factor
Concept X Pack
Traveller



Suitable Conditions: Sealed and unsealed graded roads, bush tracks and maintained national parks, however not on corrugated roads.

Limited Off-Road Models



Track Trailer Tvan
Track Trailer Topaz



Suitable Conditions: Full 4x4 Applications and Off Road Use.

IMPORTANT INFORMATION

Use of RV's on unsealed roads is becoming more popular for the pioneering and adventurous type of people. These types of travelling conditions need not stop you from having the great pleasure of touring Australia including the outback. Keeping this in mind, a sensible approach and due care needs to be taken with this type of terrain and traveling conditions.

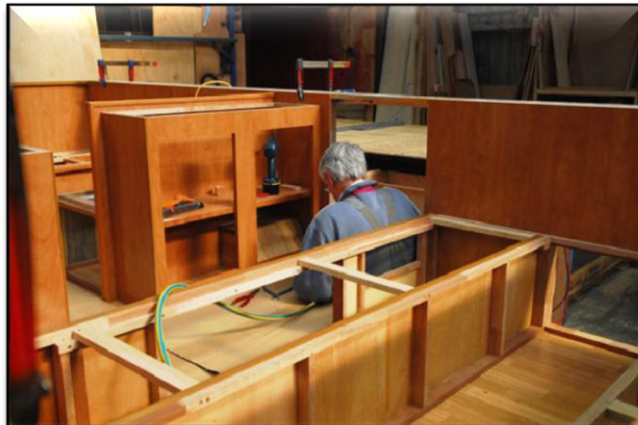
!!!THIS DOES NOT INCLUDE BUSH BASHING!!!

Corrugated roads are the worst condition to travel on and may cause damage to your RV that may not be covered by warranties.

YOUR CARAVAN IS A MAN-MADE PRODUCT!

New caravans, motor homes and camper trailer are unlike motorcars.

Where constructions in the motor industry are robotized and computerized, the Caravanning industry is more likely to be using the construction methods similar to house building by being reliant on jigs and manmade craftsmanship. Therefore, the interior and exterior of caravans, motorhomes and camper trailers will always have some minor blemishes such as; slight indentations on exterior aluminum cladding, the interior cabinetry may have small marks from staple guns, minor blemishes on ply cupboard and wall surfaces, laminated bench tops and vinyl floor etc.



Manufacturers do try to minimize these blemishes however there will always be the opportunity for blemishes to exist. Acrylic windows are also likely to scratch and should always be cleaned with a wet chamois as cleaning with dry cloths will scratch due to dust and road grime. Caravans, motor homes and camper trailers plumbing is generally less than half the size of household plumbing and therefore water flow and drainage will be at a reduced flow rate, especially drainage in shower models, due to requiring ground clearance for the under chassis plumbing as it is very difficult to run drainage pipes at an angle to allow for draining.

Electrical Information

Caravan motor home and camper trailers 240 Volt electrical supply is limited to a 15 Amp inlet which is way less than your normal house hold supply. Therefore by using many appliances or overloading your power supply may cause your safety circuit breaker to switch off.



This would be your most general warning that you are using excessive power to your caravan motorhome or camper trailer. So if you intend to use an appliance such as a larger microwave or bench top element cookers such as deep fryers, electric frying pans etc, it may be things like your air-conditioner may need to be turned off while using these to prevent overload.

For further information refer to your appliances manuals which will provide you with the power wattage usage for this appliance. If the circuit breaker switches off

every time you use the same appliance this appliance maybe faulty and should be checked by a licensed electrician.



IMPORTANT INFORMATION

When fitting accessories like shelves or towel rails, always consult a caravan repair specialist to prevent drilling into hidden electrical cables.

All electrical work should be carried out by a licensed electrician.

WARRANTY PROCEDURES TO FOLLOW

To make your RV purchase an enjoyable experience, after you take delivery, we would like to make you aware of the warranty responsibilities of yourself, the manufacturer and also the suppliers of the products and components installed by the manufacturer.

As RV's are a mobile vehicle and you could be traveling anywhere around Australia, we have put this information together with the intention to minimize any inconvenience if you were to have difficulties with your RV or any factory fitted products. When a new RV is purchased from Kratzmann's Caravans, we act as a selling agent for the manufacturer and Kratzmann's Caravans have no warrantable obligations. The manufacturer generally warrants the construction and workmanship surrounding the many appliances installed, but not the appliances themselves.

Important Points to Help You Achieve Quality Service

- Read your owner's manuals for all components fitted to your van – especially if you are having difficulties.
- Appliance Warrantable Issues - these are to be directed to the manufacturer of the appliance or its agent of the appliance concerned.

If you are unable to take your RV to Kratzmann's Caravans for repair or service, use either option 1 or 3 for the most direct method in solving your warrantable issues.

PROCEDURE 1 – Applies to Appliance Warrantable Issues:

- | | | | |
|---------------------|-------------|---------------------------|--------------------|
| 📍 Fridge | 📍 Stove | 📍 Microwave | 📍 Plumbing |
| 📍 Radios/CD Players | 📍 Windows | 📍 Doors, Chassis | 📍 Air Conditioners |
| 📍 Wheels, Tyres | 📍 Batteries | 📍 Televisions/DVD Players | 📍 Other Appliances |

Firstly go to the hand book for that particular appliance and contact the manufacturer of that appliance directly as these items are all warranted separately from the caravan.

PROCEDURE 2 – Applies if RV can be Returned to Kratzmann's:

If your warranty claim is regarding faulty workmanship to the exterior or interior construction of your caravan or chassis and you are able to bring it back to Kratzmann's Caravans to be rectified, please contact our service division to book your van in to one of our branches to have repairs made. If the nature of your warranty claim is minor you may wish to wait for your next service date and book in accordance.

PROCEDURE 3 – Applied if Unable to Return RV to Kratzmann's:

If you are unable to bring your van to Kratzmann's Caravans please refer directly to the factory manufacturer of your van for the nearest agent. Alternatively if you have a preferred repairer, feel free to take the caravan to them to assess your claim and have them fax the quote and report of the warranty work to the manufacturer to obtain warranty approval.

NO WARRANTY WORK IS TO BE CARRIED OUT WITHOUT FIRSTLY OBTAINING MANUFACTURER APPROVAL. UNDER NO CIRCUMSTANCES WILL MANUFACTURERS PAY FOR SERVICE CALLS OR UNAPPROVED WARRANTY WORK THAT HAS BEEN CARRIED OUT.

PROCEDURE 4 – If the above Procedures do not receive a satisfying result:

If you are proceeding with a warranty claim using procedure 1 or 3 and do not receive satisfaction within 48 hours, please contact Kratzmann's Caravans with an explanation of the procedure you have taken and with the contact number and name of the person you have been speaking to regarding your warranty issues.

With this information we can assist you with a speedy resolution. During the construction of your RV all manufacturers have quality control to ensure safe and reliable caravanning. At Kratzmann's we go further, completing a pre-delivery procedure and providing written confirmation of the working condition of all appliances and components fitted to your RV. All components are tested on our premises and at delivery you would have received the above mentioned confirmation documents.

SERVICE, WARRANTY & MAINTENANCE INFORMATION

Congratulations on the purchase of your new RV from Kratzmann's Caravans!

It is recommended that you regularly service your caravan/camper trailer or pop top to maintain its reliability and condition, and to comply with warranty obligations.

Please Note: The information previously listed on the warranty procedures page is to assist you in establishing whether you have a warrantable issue or not. **Some things that would not be covered by warranty include:** Damage caused by storms, wind or flood, wear and tear, bent or broken components, accidental damage, including breakages, scratches, dents, spillage or misuse of products.



Warranty does not apply to the normal maintenance that the caravan will require, such as greasing wheel bearings, tightening wheel nuts etc. or to any damages arising from the failure to have such maintenance performed. Fabric items such as canvas, seat covers etc are only covered against defective workmanship or material and not against damages such as tears, fading, soiling etc.

The warranty does not cover consequential loss such as the use of your caravan, loss of time, petrol, travel, lodging, loss of property, loss of salaries and inconvenience or damage to personal property.

Our recommendation is to follow the below service schedule at the intervals indicated.

Service Type	Date service required
1 st Service	Carried out during Pre-Delivery inspection at Dealership.
2 nd Service	Required 6 months from date of purchase.
Annual Service	To be carried out every 12 months.

Service Pricing

Single Axle **\$ 345.00** *price of servicing may change without notice*

Tandem Axle **\$ 445.00** *price of servicing may change without notice*

During your 6 month service we will attend to any warrantable issues you may have and our friendly service staff are happy to assist you with your servicing needs. Our trained technicians are experts with these products and where possible, we would ask you to give us 1 months notice when you book in your van for the service to be carried out.

Please phone our service departments to arrange a booking.

VIRGINIA – (07) 3265 2477

BURPENGARY – (07) 3888 2755

We are able to offer our service facilities with in the following hours:

Monday to Friday: 8:00am to 4:30pm *(excluding Public Holidays)*





TYRE PRESSURE GUIDE

This is to be used as a Guide Only.
Please check with the Tyre
Manufacturer for accurate pressures.



MODEL DESCRIPTION	TYRE SIZE	PRESSURE UNLOADED		PRESSURE LOADED	
		PSI	KPA	PSI	KPA
14' Sportsliner	185/60/14	25	175	28	195
A'liner	185/75/14	26	180	29	200
A'liner with Light Truck	195R/14 LT	28	195	31	220
Cruiselineer	195R/14LT	28	195	31	220
Single Axle Pop-top to 14'	195/14LT	36	250	38	265
Single Axle Pop-top to 16'	195R/14LT	40	280	42	295
Tandem Axle 17' to 19'	195R/14LT	38	265	40	280
Tandem Axle 20' to 24'	195R/14LT	42	295	44	310
15' 4X4 Wheels & Tyres – Single Axle Pop-tops to 14'	15' or 16' 4X4	32	225	36	250
15' 4X4 Wheels & Tyres – Single Axle Pop-tops to 16'	15' or 16' 4X4	34	240	38	265
Tandem Axle 4X4 16' to 19'	15' to 16' 4X4	34	240	38	265
Tandem Axle 4X4 20, to 24'	15' or 16' 4X4	38	265	42	295

FURTHER INFORMATION:

-  High tyre pressure can cause damage to your RV construction, due to the hard ride and bouncing effect.
-  If travelling on corrugated roads reduce the tyre pressure to the recommended minimum pressure and travel at a moderate speed. Put the tyre pressure up to the normal pressure as soon as you get off the corrugated road.
-  This information is based on our experience in the caravanning industry and may vary from some Tyre manufacturers.
-  When towing your RV, you should also increase your tow vehicle rear tyre pressures by approximately 4PSI or 28KPA to accommodate the load pressure on your tow bar.

PRE-TRIP PRACTICE RECOMENDATION

As a RV is a small house on wheels. It has mechanical components that enable it to be towed and has many of the features you would find in the average home for your comfort.

It is fair to say it will take a little bit of time for you to become familiar with all aspects of your RV. For this reason we strongly recommend you practice with your RV and read all of your hand books before you take your first adventure. Our recommendation is to take it home and use every aspect of the van over a couple of days, including stove, fridge, air conditioning, toilet and shower if applicable.



If possible have a meal and sleep a night in the RV. This will familiarize yourself with your new RV and give you a firsthand experience in the use of the many appliances, gas, lighting etc. This will ensure you have a good knowledge and understanding of your new RV before you adventure out into this wonderful country of ours.

Also familiarize yourself with your roll-out awning or annexe if applicable. We believe that this sort of preparation can be a lot of fun and is a good opportunity for you to find out all the workings of your van.



IMPORTANT INFORMATION - OVERLOADING

Overloading your van can void your warranty and cause damage due to overloading. Ensure the drawbar and rear bumper bar are not used for fitting generators, trailbikes, toolboxes, etc as this part of your van has not been designed to withstand additional loads not approved by the manufacturer.

!!REMEMBER!!

The Tyre Pressure being too high may cause damage to your van on rough and uneven conditions.

Hook-Up & Before Travel

- ✓ Always service your 7 pin plug on the trailer and tow vehicle, keep it clean
- ✓ Check Wheel nuts, tyre pressure and coupling bolts
- ✓ Check coupling handle is in the lock down position, safety chains are fitted, 7 pin plug plugged in and towball is tight
- ✓ Handbrake is off, check cables are loose when the hand-brake is off
- ✓ Front window stone guard is in the lock down position
- ✓ If required, towing aids should be installed correctly and lubricated as necessary
- ✓ Front boot locked down and jockey wheel removed and stored
- ✓ The four corner stands are wound up
- ✓ The roll out awning arms are locked in and the winder catch is in wind up position
- ✓ Turn Gas bottles off at the draw bar
- ✓ Check all 12 volt lights are working – stop, tail lights and blinker
- ✓ Check brakes are working in the first 50 meters of travel
- ✓ Adjust the brake controller as necessary in the first 200 meters of travel
- ✓ Do not over adjust the brake controller as this will overheat the brakes on your rv

Inside the van

- ✓ All 12 volt lights switched off
- ✓ All windows closed and catches locked
- ✓ Roof hatches down and locked
- ✓ All cupboards are packed and closed
- ✓ All loose items are secured
- ✓ Cupboards and fridge packed correctly and lock fridge door
- ✓ If the tow vehicle has a 12 volt hot wire set fridge to 12 volt DC
- ✓ Leave nothing on bench tops, table or loose on the floor as sudden change in direction may cause missiles, causing damage to your van or camper trailer.

HELPFUL HINTS:

- ✓ After traveling 15 minutes or so, pull over where it is safe and check to see if everything is still in a safe, secure position.
- ✓ You should slide the manual over-ride button on your brake controller a few times when you start travelling, this will dislodge dirt and surface rust on the brake drums so that your brakes do not grab on application.
- ✓ When towing, your tow vehicle may require more pressure in the rear tyres, check your vehicle owner's manual for directions.

Arrival and Set-Up at Caravan Park

Park your caravan or camper trailer on level ground as your fridge won't work efficiently unless the caravan is level. Use the jockey wheel to help to get the caravan level. Don't use the corner stands to level, they are only to stabilize the van and won't hold excessive weight and the shafts will bend.

Remember the manufacturer will not warrant corner stands that are bent or damaged. Ensure that your hand brake is on hard and immobilize the wheels to ensure your RV will not move in heavy wind etc.

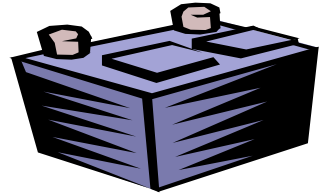


Pop-top or wind up camper trailer

- ✓ Unclip the four corner roof clips. If you have a wind up camper trailer and your corner roof clips are not undone you will damage the cables if you try and wind up the roof. This type of damage is not covered under warranty.
- ✓ Pop-Top Caravan - Make sure the main door is open to eliminate vacuum when the roof is pushed up. This makes raising the roof an easy job.
- ✓ Roll out and set up the roll out awning
- ✓ Plug in your 15 amp, 240 volt and power lead to Caravan Park Power Outlet, check power lead condition regularly
- ✓ Check lights etc. are working
- ✓ Start the fridge on 240 volt position
- ✓ Switch gas bottles on and test the stove
- ✓ Hook up your mains pressure water hose
- ✓ Turn taps on to clean all pipes out ready to use
- ✓ Hook up sullage drain hose if applicable
- ✓ Check inside all your cupboards and fridge for breakage and leaking food items that may have been disturbed in transit.

BATTERY WARRANTIES & MAINTENANCE

Most batteries carry a six (6) month warranty however with the correct maintenance you may achieve a long life from your battery.



TO HELP PREVENT YOUR BATTERY GOING FLAT DURING STORAGE

It is important to ensure your battery is fully charged and is preferable for you to remove the earth terminals from your battery. This will prevent power leakage, in turn causing the battery to flatten over a period of time.

If you elect to leave your terminals intact it is then important that you ensure everything in your caravan that is 12 volt is switched off and that your battery charger is plugged into 240volt power, to keep your battery charged.

If your battery does go flat and is left flat for several weeks or more, your battery is likely to calcify and will not recharge. This condition is not covered by battery warranties; therefore it is important to keep your battery fully charged at all times.

General Maintenance on the battery should be carried out and any corrosion around the terminals should be removed.

If a charger is installed, most caravans and camper trailers have low amp battery charges with auto cut out if the battery gets below approximately 10 volts, the battery charger will not operate. If this happens, you will need to remove your battery and take it to be charged on a high amperage battery charger, usually found at most mechanical workshops and auto electricians.

240 VOLT, 15 AMP POWER SUPPLY INFORMATION

240 Volt inlet leads for recreational vehicles are required to be of a 15 amp specification. A 15 Amp power lead will have a larger pin on the earth which will not fit in your normal house hold power point.

To plug 240 volt power from your home to your RV you may require a qualified electrician to install a 15 amp power point to facilitate the power lead for your caravan.

AUSTRALIAN STANDARD SPECIFICATION FOR 7-PIN PLUG

No.1	YELLOW	→ Left Indicator
No.2	THICK ORANGE	→ Auxiliary and power for fridge
No.3	WHITE MAIN EARTH BLACK BRAKES EARTH	→ Earth
No.4	GREEN WIRE	→ Right Indicator
No.5	BLUE WIRE FROM ELECTRIC BRAKES	→ Power to electric brakes
No.6	THIN RED WIRE	→ Stop lights
No.7	BROWN WIRE	→ Tail & clearance lights

PLEASE NOTE: This colour code is provided as a guide only and may vary from brand to brand, however the numbers should be as outlined.

WEIGHT DEFINITIONS

ATM = TARE + PAYLOAD

Aggregate Trailer Mass: The total laden weight of a trailer, which includes the tow ball mass and whatever you add as payload (e.g. water, gas, luggage). The ATM is specified by the trailer manufacturer and must not be exceeded

GTM = ATM – BALL WEIGHT

Gross Trailer Mass: The total permissible mass which includes whatever you add as payload (e.g. water, gas and luggage) that can be supported by the wheels of a trailer. This does not include the mass supported by the tow ball. The GTM is specified by the manufacturer and must not be exceeded.

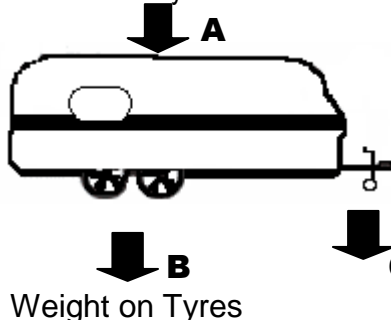
TARE MASS

The unladen weight of the trailer

TOW BALL MASS

The weight imposed on the rear of the tow vehicle's tow ball from a trailerball from a trailer

Payload including gas, water, clothing,
food and all non factory fitted accessories



$$\mathbf{ATM = A + B + C}$$

$$\mathbf{GTM = A + B}$$

$$\mathbf{TARE MASS = B + C}$$

BALL WEIGHT = DOWNLOAD ON TOW VEHICLE AT
COUPLING

MANUFACTURERS DISPLAY MOST OF
THIS INFORMATION ON A V.I.N. PLATE

Caravanning Hints & Frequently Asked Questions

<p>How often should I service my caravan or camper trailer?</p>	<p>1st Service - This is carried out during Pre-Delivery inspection at our Dealership.</p> <p>2nd Service - 5,000km or 6mths from date of purchase</p> <p>Annual Service – To be carried out every 12 months.</p>
<p>How do I operate my 240 volt appliance?</p>	<p>Please thoroughly read your owner's manual relating to that appliance. If you are still having trouble understanding the operation of the appliance, contact the manufacturer or the agent as shown in the owner's manual for assistance.</p> <p>Power Points – Power points for appliances are usually located in the cupboards surrounding the appliance. Ensure that all of your appliances are correctly plugged in and switched on before attempting use.</p> <p>For further information please refer to the owner's manual for this appliance.</p>
<p>I don't have any 240V Power</p>	<p>Circuit Breaker is in the ON Position and check your site power lead connection is securely and correctly fitted. Test any Power point with a hair dryer, drill etc to confirm power.</p>
<p>Your Microwave</p>	<p>The power lead is usually in a cupboard and needs to be plugged in and switched on. When travelling make sure that the glass tray is wrapped in a tea towel and packed securely somewhere safe. Some microwaves don't have a door catch and the door may come open during the travel, if this is the case, remove the glass tray and store somewhere else]</p> <p>For further information please refer to the owner's manual for this appliance.</p>
<p>Air Conditioning</p>	<p>Air Conditioning in Caravans and Campers and How Effective it Should Be....</p> <p>Roof top air conditioners installed to full height caravans work extremely well due to the insulation properties of this type of van, however on hot days it is recommended that opening and closing of the main door to be minimized due to the small area of inside a caravan allowing a lot of hot air through the door which forces the air conditioner to work harder than normally necessary.</p> <p>Pop top caravans' Air conditioning will not be as effective due to the vinyl sock area between the roof and the top of the caravan having no insulation properties at all.</p> <p>Camper trailers with canvas ends example, Windsor Rapids have even less insulation properties so the air conditioner cannot be expected to be as efficient as in hard top caravans. In extremely hot conditions, it is recommended that in this type of vehicle where possible, that ends be folded in to allow air conditioner to cool effectively. Of a night time when going to bed if you fold the ends out with the air conditioner continuing to run, you will get better air conditioning properties due to the fact that the sun is not coming in contact with the canvas ends.</p>

	<p>Opening and closing of doors and windows and unzipping vinyl or canvas areas eliminates the opportunity for the air conditioner to work effectively.</p> <p>There are many different brands and models of Air Conditioning. Most have a thermostat control which will prevent cooling if the temperature is below 18°C. Please read the handbook on the unit that is fitted to your van.</p> <p>For further information please refer to the owner's manual for this appliance.</p>
<p>Gas</p>	<p>If you smell gas in your van, switch the gas bottles off and open your van and let fresh air in for at least 1 hour and get all gas lines checked by a licensed gas fitter prior to reusing. If your van is still in the warranty period contact your selling dealer.</p> <p>When lighting gas appliances after filling gas bottles make sure you connect the gas line correctly & turn on the gas cock at the bottle. Ensure that all gas cocks are on for that appliance (handle must be parallel to gas line, these may be located under the van or in the cupboard near the appliance)</p> <p>For further information please refer to the owner's manual for this appliance.</p>
<p>Fridge</p>	<p>Lighting of Fridge – When lighting the fridge follow the operation instructions in the fridge manual. This may need to be repeated several times if air is in the gas lines and until the air has passed through the line.</p> <p>Absorption Fridges generally take up to 8 hours to cool and there may not be any sign of cooling in the first 3 – 4 hours.</p> <p>Absorption Fridges have no motors and you cannot hear them running. If your fridge is working correctly there will be heat coming from the top fridge vent located behind the fridge on the outside of the caravan the heat appears approximately 1 hour after start up.</p> <p>3-way 12 volt, gas and 240 volt fridges are called absorption fridges and need to be completely level to operate correctly. This type of fridge has no motor and makes no noise. If on 240 volt make sure the power lead is plugged in and switched on.</p> <p>An absorption fridge is efficient but won't perform to the same level as your household fridge and it is a good idea to pre-run your fridge for 24 hours before leaving to go on your trip. It is also a good idea to pre-cool items to go into the fridge to prevent the fridge from warming because of warm goods put in it. For further information please refer to the owner's manual for this appliance.</p> <p><u>HELPFUL HINT WITH ABSORPTION FRIDGES:</u> As absorption fridges are slow to cool it is important not to open the door frequently as every time you open the door you fill your fridge full of hot air and if the door is opened frequently continuously letting hot air in the fridge may never perform up to expectations.</p>

<p>Stove</p>	<p>Lighting of Stove –Turn on the knob to the big flame symbol & hold in until you can smell gas. Release the knob & leave for approximately 2 minutes then follow the lighting instructions in the manual.</p> <p>Your stove will almost always be a gas unit and simple to operate. Make sure the gas bottles are turned on and the safety cock on the gas line in the cupboards is in the ON position. Never use your stove to heat your van. If you close the windows and try to heat the inside of the van with the stove, it may use up the oxygen in the van and can be very dangerous. For further information please refer to the owner’s manual for this appliance.</p>
<p>Hot Water System</p>	<p>Hot Water System – Identify which brand of Hot Water System you have:</p> <ol style="list-style-type: none"> 1. Truma 2. Suburban <p>Then read instructions:</p>
<p>Truma</p>	<p><u>Truma Hot Water System Start Procedure</u></p> <ol style="list-style-type: none"> 1. Connect the mains water pressure to the caravan. Ensure your tank is filled with water. 2. Turn the hot water tap on and let the water flow through the tap until there is fresh running water with no evidence of air in the flow. 3. Ensure the gas is switched on and the gas cock is open and that the gas lines in the caravan have had the air bled – see below. 4. Connect power to the caravan to enable the starter switch to start the Hot Water System. 5. Remove the plastic dust cover off the outside of the door. 6. Ensure the 3-way switch on the wall, usually located on the interior wall kitchen area gray switch panel, is set to either 60 or 70 7. When you set the switch to 60 or 70 a red light will flash in the switch and will automatically start the Hot Water System. If the Hot Water System service does not light in 60 seconds, the red light in the switch will come on and stay on. If the red light comes on and stays on, switch the switch to the off position for three minutes, and then restart the procedure from step 6. If after 60 seconds the red light is off, your Hot Water System is working. <p>Please read your owner’s manual for further instructions.</p>
<p>Suburban</p>	<p><u>2. Suburban Hot Water System Start Procedure</u></p> <ol style="list-style-type: none"> 1. Connect the mains water pressure to the caravan. Ensure your tank is filled with water. 2. Turn the hot water tap on and let the water flow through the tap until there is fresh running water with no evidence of air in the flow. 3. Ensure the gas is switched on and the gas cock is open and that the gas lines in the caravan have had the air bled – see below. 4. Connect power to the caravan to enable the starter switch to start the Hot Water System. 5. Switch on the Hot Water Switch, usually located on the interior wall kitchen area white switch panel with red light, the red light will come on for approx 15 seconds then go out. If your Hot Water System has been started the red light will stay out. If the system did not start after approx 20 seconds the red light will come on again and automatically go through the abovementioned cycle. This cycle can repeat up to three times. If the

	<p>Hot Water System does not start after the cycle was completed three times, the light will come on and stay on. If this happens, switch the switch off for 5 minutes, ensure the gas supply is not empty or switched off and retry the above procedure.</p> <p>Please read your owner's manual for further instructions.</p> <p><u>** Never try to light any gas appliances if you can smell gas – refer to the gas information.**</u></p> <p>The simple way to bleed air from the gas lines which is required every time you refill your bottle or the gas has been off for a long period of time. Ensure your gas bottles are full and the gas cock is switched on. Light the largest burner on your stove and continue to light it until the flame burns with a solid, continuous flame. After doing this all other gas appliances should start easily.</p>
<p>Brakes</p> <p>My brakes are overheating</p>	<p>If you run your brake controller fitted to your tow vehicle too high this can cause the brakes to overheat. If this occurs, stop & let your brakes cool. The brake drums should run cool on the highway but may warm up in city areas or suburbs as they get more use. The door side brake may run warmer than the other side. This is caused by the magnet inside the brake drum rubbing on the drum surface due to the camber on most roads. Your hand brake cable must be quite loose when the hand brake is in the off position on your trailer.</p>
<p>Brake Safe</p>	<p>Caravans with a loaded axle manufacturer specification of over 2000kg have a battery operated brake safe device. The cable is on the drawbar of your trailer and must be hooked to your tow vehicle when towing. If the caravan becomes dislodged from the tow vehicle the cable will pull the pin from the device on your drawbar and will therefore automatically bring the brakes of your trailer on.</p>
<p>Why isn't my water pump working?</p>	<p>Ensure that your tank is filled with water and the switch is turned on. If this does not work it may be due to an airlock in the pump. To rectify this problem switch the pump on and turn the sink tap on. By sucking on the tap you will free any airlocks. If any foreign matter get into the pump this can hold a valve in the pump open, causing the same problem. Always ensure that the switch is turned off when the pump is not in use and/or if the van is connected to mains pressure.</p>
<p>Noisy Water Pumps</p>	<p>Caravan water pumps are noisy and this is caused by the pumps resonating through furniture and piping in enclosed areas. When using taps, always switch the pump off. This will prevent over pressure of the plumbing, pipes and pump. If on mains pressure, pumps need to be switched off.</p>
<p>Water Tanks</p>	<p>Water tanks must always be filled with a hose on low pressure so as not to pressurize the tanks which could rupture the water tank.</p>
<p>Corner Stabilizers</p>	<p>Ensure that the Corner Stabilizers are not used to carry the weight of the van as this will bend the shafts and void warranty on the stabilizers. These are only to be used to firm the van to the ground while parked.</p>
<p>Front Boot</p>	<p>Front boots on caravans and camper trailers are not water or dust proof. Please ensure that items stored in the front boot are not water or dust sensitive</p>

Maintenance on Windows & the Door Locks

Main Door – It is important that the Triple Lock Security Doors are key-locked before transit to prevent them from flying open in transit. Some pressure may need to be applied to the top and bottom of the door when locking.

Wind-out Windows – Wind out windows are to be secured before transit and are to be treated with light hands as the gear boxes that the windows wind out on have hardened plastic cogs which may strip with ill-use. The rubber seals on the windows when not used often tend to stick to the window frames. If you were to forcefully wind out the windows it may strip the cogs and break the seals. Before winding out the wind-out windows, unclip the securing latches and wind the handle. The window should wind out easily. If it does not, go to the outside of the window and pull the window gently with your fingers to relieve the rubber seal from the van. A light smear of Vaseline on the seals will help to prevent sticking. Nearly all windows are wind-out and have lock catches to secure when closed. The window winders have plastic gears and will last indefinitely if used correctly and maintained. These gears may strip if a person tries to wind the windows out while the catches are in the lock position. This type of damage is not covered under warranty and these windows are designed to wind out with ease and never be forced.

If your van has been in dusty areas the window boxes will need to be cleaned out and lubricated. Your service provider should do this. All door and window locks need to be lubricated regularly using CRC spray or a similar product to ensure that they remain in good working order.

Raising and Lowering of Pop-Tops

Please ensure when lowering Pop-Top roofs that the main door is opened and latched back to allow compressed air created from lowering the roof to escape. Ensure the pop-top zips are in the middle of the zipped area and the vinyl area of the pop-top is pointing inside the van. While the roof is being lowered prevent the vinyl from being crushed between the roof and the mechanism as this will cause damage to the vinyl. You may need to pull the vinyl in with your hands while lowering the pop-top. When raising the roof you will need to ensure the main door is latched back to prevent vacuum while raising the roof.

NOTE: Pop-Tops with roll out awnings must be set to “Roll-Out” for raising or “Roll-In” for lowering.

Dust & Your Caravan

When a caravan is traveling along the highway behind your tow vehicle, the atmosphere in your van is at a different pressure to the outside causing a vacuum effect and if traveling on dusty roads this vacuum effect will cause dust to be sucked into your van around doors, windows, fridge vents, plumbing fittings, floors etc. If you feel you will be traveling on a lot of dusty roads, a device can be fitted to the roof of your van called a **Pressure Hatch** to equalize the pressure inside and outside your van and helping to eliminate most of the dust from entering your van. It is an expensive job to have a pressure hatch fitted to your van but not worth doing if you do not think you will be traveling along a lot of dusty roads. It is important that you **do not use your regular roof hatches** as a supplement for a pressure hatch during transit as they will get blown off or damaged.

Cleaning your Caravan or Camper Trailer.	Use car wash type products on aluminum cladding & chassis. Canvas camper trailer tents may be cleaned with the same type car wash. Ensure that all the canvas is dry before packing the camper trailer down.
Parking Your Van When Not In Use	It is a good idea to wind the jockey wheel up or down when parking your van while not in use. This is so that any water will run off your van in wet weather. Caravan roofs are not level and often have dips and concaves which hold water. Keeping your van parked in an unlevel position allows the water to run off the roof of your caravan instead of pooling.
Loading Your Trailer	<p>Most manufacturers allow 300kg for single axle & 400kg for tandem axle. This load is to include the gas in the bottles, water in the tanks & any aftermarket fitted accessories or components.</p> <p>The best way to load your van is to use common sense. Keep heavy items to the floor around the axle area & lighter items to the rear. If your trailer is badly loaded this may cause it to sway or put too heavier down load on your tow vehicle.</p> <p>Modern trailers are well balanced & in most cases the loading is not critical, however, remember the better you load your trailer & tow vehicle, the better it will tow.</p> <p>Never use the bumper bar or draw bar on your caravan for added items such as boat motors, trail bikes, generators, etc.</p>



**LIVE
THE
DREAM**